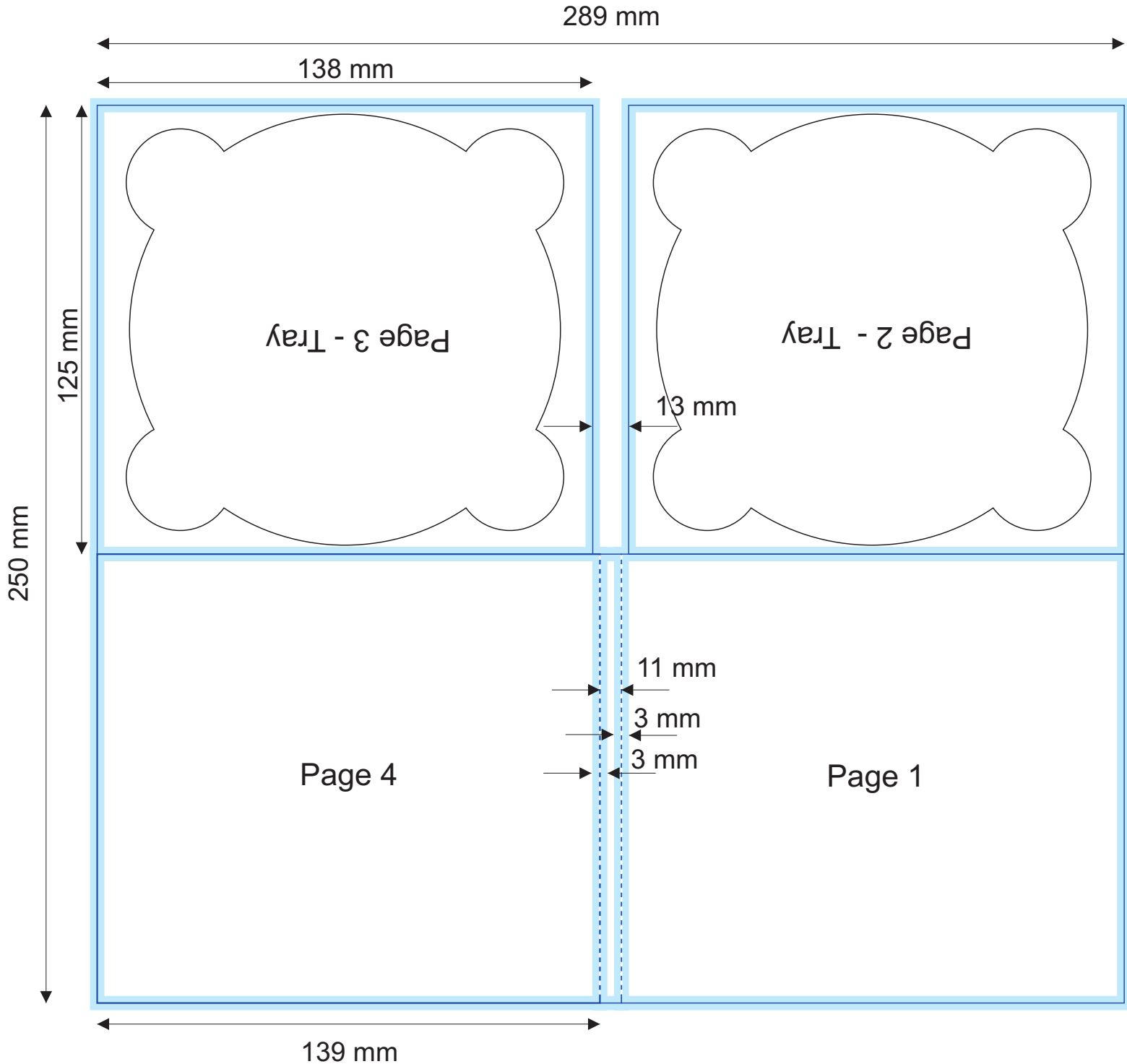


Digipack 4p 2CD



bleed
margin

Bleed area and inner margin. The components in the bleed and margin area may be cut or moved in the production process. Colours under bleed and margin will not be changed.

File's format: TIFF (LZW compression)

Colour palette: CMYK

Resolution: 600 DPI

Print area: 289 x 250 mm (296 x 256 mm with a bleeds

- On the bleeds should be no text or pictures to avoid cutting them.).